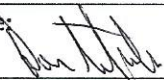


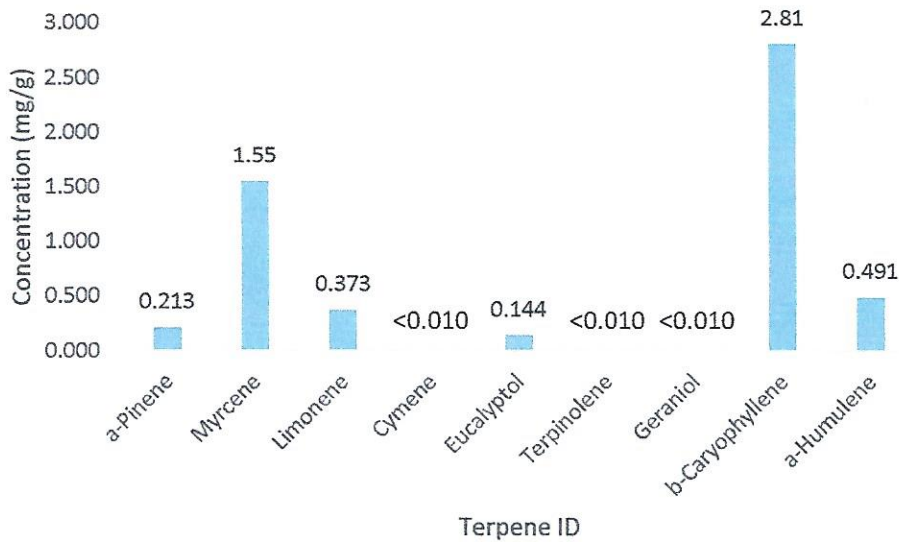
CERTIFICATE OF ANALYSIS

Certificate ID: CS0138_18790_001_T **Grown 2 Gold**
Client Sample ID: Extract 1 **714 N. 5th Ave. Unit 2**
Sample Description: Dry Ice Baux Extract **Wilmington, NC 28401**
Sample Received: 22-Oct-18 **Attn: Boone Rivenbark**
Analysis Initiated: 23-Oct-18

| | | |
|-----------------------------------|--|---------------------------|
| Analyst: Daren Stephens | Signature:  | Date: 25 OCT 18 |
|-----------------------------------|--|---------------------------|

Test Type: Terpene Profile
Technical Procedure: TP A0037-001

Results:¹



| Terpene ID | Concentration (mg/g) |
|-----------------|----------------------|
| α-Pinene | 0.213 |
| Myrcene | 1.55 |
| Limonene | 0.373 |
| Cymene | <0.010 |
| Eucalyptol | 0.144 |
| Terpinolene | <0.010 |
| Geraniol | <0.010 |
| β-Caryophyllene | 2.81 |
| α-Humulene | 0.491 |

¹Concentrations of terpenes were determined by GC-MS with an Avazyme intra lab method utilizing certified reference standards for each chemical analyzed. Values reported to three significant figures.

Avazyme warrants that this study was performed in accordance with appropriate laboratory research practices and protocols. Avazyme is not responsible for Sponsor's use of the information or concepts generated as part of the study, and will not be liable for any loss or damage resulting from such use.